

AEROMOTUS



ENTERPRISE DRONE SOLUTIONS

FOR DIGITAL TRANSFORMATION
of your Business with accuracy,
efficiency and productivity



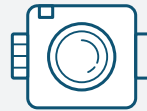
DJI Authorized Dealer

AT A GLANCE



ENTERPRISE DRONES

Enterprise Drones for Surveying, Mapping, Visual and Thermal Inspections, Surveillance, Gas Detection, PublicSafety and much more applications...



PAYLOADS, CAMERAS, SENSORS

Aerial Photogrammetry Cameras, Surveying Cameras, Oblique Surveying Cameras, LiDAR, Gas Detectors, Multispectral Camera, UV/ Corona Camera and much more..



SOFTWARE - PREMISE AND CLOUD

Aerial Photogrammetry, LiDAR Processing, Drone-to-CAD/ GIS, Remote Visual Inspection, Thermal Inspection, Solar PV Analytics, AI-powered Analytics, Hydrographic Processing, Flight Mission Software, Drone Fleet Management Drone Operations...



TRAININGS AND SUPPORT

Industrial Drone Flight Training, Drone Surveying Training, Drone Inspection Training, Data Processing Training, Virtual Technical Support, After Sales Repair Services...



DJI Matrice M300

DJI MATRICE M300 DRONE

The Matrice 300 RTK is the DJI most advanced commercial drone platform that takes inspiration from modern aviation systems. Offering upto 55 minutes of flight time, advanced AI capabilities, 6 directional sensing and positioning and more, the M300 RTK sets a whole new standard by combining intelligence with high performance and unrivaled reliability.

- Improved Transmission System
- Enhanced Flight Performance
- Multiple Payload Configurations
- Advanced Intelligence Smart Inspection
- Live Mission Recording
- AI Spot-Check
- Waypoints 2.0
- Smart Pin & Track
- Aviation-Grade Situational Awareness
- Advanced Dual Control



DJI Zenmuse P1



DJI Zenmuse L1

CAMERAS FOR PHOTOGRAMMETRIC SURVEY AND LIDAR MAPPING



DJI Zenmuse H20T/H20



DJI Zenmuse H20N

CAMERAS FOR VISUAL, THERMAL AND NIGHT VISION INSPECTIONS, SURVEILLANCE AND SECURITY



DJI MATRICE M30 RTK

DJI MATRICE M30

The new DJI Matrice 30 is DJI Enterprise's flagship drone that fits in a backpack. It integrates multiple high-performance sensors into one single camera payload, is controlled with an ingenious redesigned remote control and runs on upgraded Pilot 2 software, which significantly improves the flight experience. The M30 model offers much more power, endurance and capability for rugged professional uses, while its size makes it ideal for easy transportation and fast setup.

- **Powerful Flight Performance**
- **Environmental Adaptability**
- **Safe and Reliable**
- **Redundancies and Backup Systems**
- **Enhanced Transmission**
- **Lightweight and Portable**
- **Capture Everything**
- **Superior Image Quality**
- **Reimagined User Interface**



DJI MATRICE M30T RTK THERMAL



DJI MAVIC 3 ENTERPRISE

DJI MAVIC 3

The Mavic 3 Enterprise Series redefines industry standards for small commercial drones. With a mechanical shutter, a 56x zoom camera, and an RTK module for centimeter-level precision, the Mavic 3E brings mapping and mission efficiency to new heights. A thermal version is available for firefighting, search and rescue, inspection, and night operations.

- **Compact and Portable**
- **Two Models, Countless Applications**
- **Survey with Speed**
- **Improved Low-Light Performance**
- **See the Unseen**
- **Focus and Find**
- **Simultaneous Split-Screen Zoom**
- **Next-Generation Image Transmission**
- **Omnidirectional Sensing for Safe Flying**
- **Batteries Optimized For Endurance**



DJI MAVIC 3 ENTERPRISE THERMAL



Drone based Integrated Systems Integrator and Provider with Sensors for geophysical, hydrographic, industrial, archeological surveying, environmental monitoring, bathymetric surveys, buried utility and round penetration system, magnetometers, metal detectors. for firefighting, search and rescue, inspection, and night operations.



Drone Show Software is the only commercially available solution developed specifically for outdoor drone show management. It has an intuitive interface allowing you to control a swarm of up to hundreds of drones on a 3D map with high precision and uncompromising safety.



Drone Flight Planning and Control Software including Automatic LiDAR toolset, Terrain following, Route import from KML or CSV files, Photogrammetry tool, Vertical scan tool, Area Scan tool for non-camera sensors, Corridor mapping, SAR patterns, Import custom map and terrain elevation data, Live geotagged video stream, Work offline

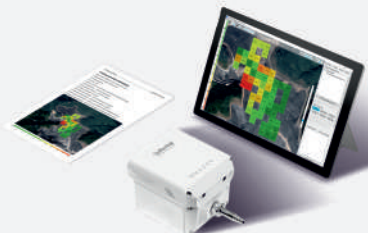
soarability



Sniffer4D- Multi-gas Detection & Mapping System

Designed for drones & ground vehicles, Captures spatial distributions of gases and particles, Generates 2D/3D concentrations maps in real time Significantly improves work efficiency and reduce risks and costs.

One-stop Workflow, Flexible Sensor Configuration, Compatible with Various Mobile Platforms | Reliable and Complete Dataset, Real-time Data Transmission and Analysis, Generate 2D/3D Spatial Distributions in Real Time, One-click Result Delivery.



SHARE

Smart Oblique and Full Frame Photogrammetric Survey Camera that can be easily used with DJI Matrice M300RTK Drone and other drone platform.

Smart Oblique High Resolution cameras are the best tool for Realistic 3D modeling, Accurate 2D Modeling applications: Smart City, Land Surveying, Architecture, Heritage Site
Share Camera Models: Share 100M Pro, PSD 102V3, Share 102S, 202S, 303S, 6100XPro



UV cameras and IR cameras on the DJI Matrice M300RTK Drone are used in different inspection scenarios, such as transmission towers, wildfires, wind turbines, etc.

ZQ provides the turn-key solution for intelligent infrastructure inspections, focusing on AI applications driven by user demand and cutting-edge technology.

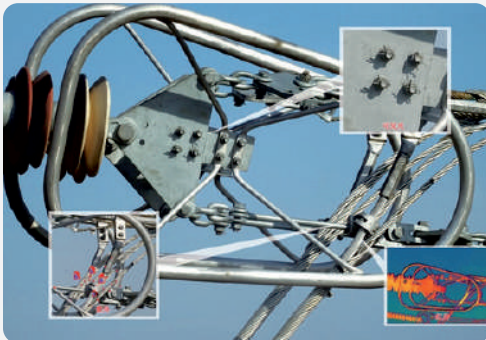
Four-in-One Payload

The four-in-one payload (UV+UAV system) carries a UV sensor, an IR thermal imaging camera, a Zoom EO Camera, and a ToF sensor.

Two measurements - one screen

The camera has three different modes in which it can display the UV source:

- 1.UV + IR : Allowing thermal imaging
- 2.UV + EO : Allowing Zoom
- 3.UV: Only displays the UV sensor output, excellent for fast verifications.





MS600 Pro Multispectral Camera for DJI Matrice M300RTK Drone

MS600 Pro is an industry standard UAV based multispectral camera with six spectral bands, double red edge channels and 12-bit RAW. Reflectance data can be accurately obtained by MS600 Pro. Powered by DJI X-Port, MS600 Pro can be seamlessly integrated with DJI Matrice 200 Series V2 and Matrice 300 Series platforms, which can be used in agriculture, forestry, environment, and disaster evaluation, etc.



2D/3D DATA PROCESSING SOFTWARES



RealityCapture is the state-of-the-art photogrammetry software solution that is changing the industry. It is currently the fastest solution on the market, which brings effectivity to your work and allows you to focus on your targets. Photogrammetry software application for Windows, which enables you to create ultra-realistic 3D models from a set of images and/or laser scans. Create virtual reality scenes, textured 3D meshes, orthographic projections, geo-referenced maps and much more from images and/or laser scans completely automatically.



Agisoft Metashape is a stand-alone software product that performs photogrammetric processing of digital images and generates 3D spatial data to be used in GIS applications, cultural heritage documentation, and visual effects production as well as for indirect measurements of objects of various scales. Discover intelligent photogrammetry with Metashape. Process digital images and generate 3D spatial data. Fast and highly accurate.



Virtual Surveyor is a Smart Drone Surveying Software. Survey efficiently with the Drone Data. Powerful analysis and visualization of your drone surveys. Virtual Surveyor is ideal for civil construction, infrastructure, mining and quarrying projects of any size. From road surveying to topography mapping, volume calculations and cut/fill mapping, Virtual Surveyor gives you the tools to quickly and accurately track and optimize your project as it takes shape. A perfect solutions for Topographic surveys, Mining & quarrying, Construction earthworks, Stockpile inventory.

CONTACT US



+9714 351 2929



Al Moosa Tower 1, Sheikh Zayed
Road, Dubai, United Arab Emirates



www.aeromotus.com



sale@aeromotus.com

AEROMOTUS



**Empowering Enterprises
in adopting with Drone Technology**